

CHAMBER TUBELESS™

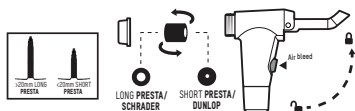
Floor pump

Part# 7085522

OPERATING IN PUMP/RELEASE MODE

Operate pump in "Pump/Release" mode with lever locked in vertical position (FIGURE A). This will allow air to bypass reservoir for more efficient direct-to-tire pumping.

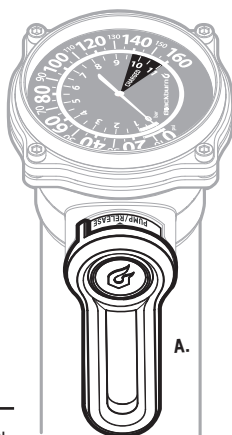
ANYVALVE PUMP HEAD WITH AIR BLEED BUTTON



Note: Air bleed does not work on Dunlop valves.

TO USE IN CHARGE MODE AND SEAT TIRE

1. Rotate lever up 90° to "CHARGE" mode with lever in horizontal orientation. Insure it locks in place.
2. Operate pump and charge reservoir to 160psi. (Figure B)
3. Return lever back to "Pump/Release" mode to instantly release tire bead seating pressure.

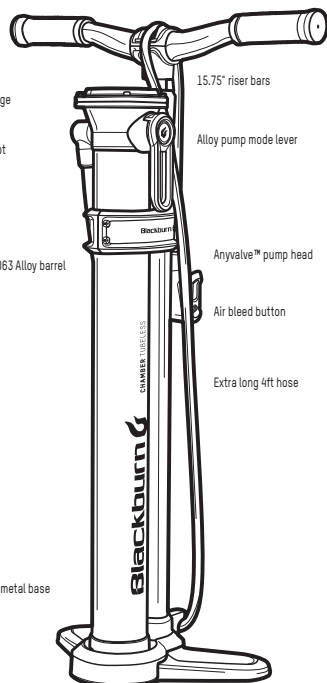


160 PSI, top-mounted gauge

Hose pivot

T6063 Alloy barrel

Stamped metal base



31.8mm stem clamp

15.75\"/>

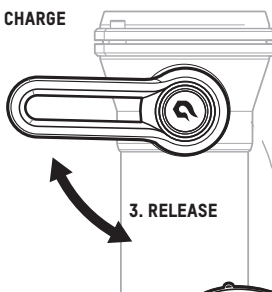
Alloy pump mode lever

Anyvalve™ pump head

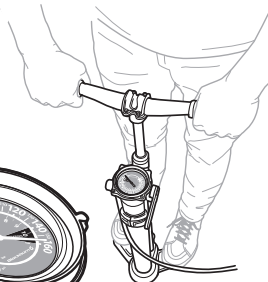
Air bleed button

Extra long 4ft hose

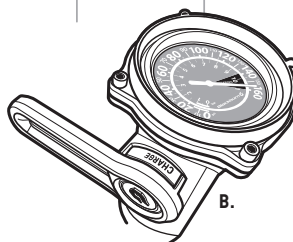
1. CHARGE



2. PUMP



3. RELEASE



WARNING: DO NOT CHARGE YOUR PUMP PAST 160PSI AS INDICATED ON THE GAUGE. NEVER OVERINFLATE YOUR TIRE. SEE SIDEWALL FOR MANUFACTURER RECOMMENDED TIRE INFLATION PSI. KEEP FINGERS CLEAR OF TIRE WHEN SEATING BEAD.

Blackburn 

Customer Service: 1-800-456-2355
Blackburndesign.com
Printed in Taiwan

**LIFETIME
WARRANTY**

CHAMBER TUBELESS™

Floor pump

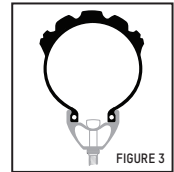
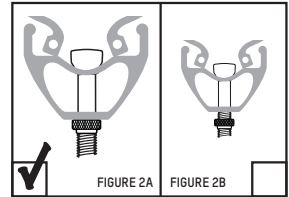
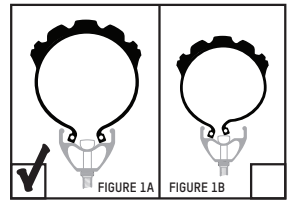
WHEN SEATING AND INFLATING TUBELESS TIRES

Carefully follow the tire manufacturer's recommended installation instructions. When installing new valve stems, tighten the stem completely as to ensure a leak free seal. If installation is correct, the bead of the tire will audibly pop into the rim as shown in Figure 3 and the tire will inflate. Use the pump to dial in your desired pressure. Use the air bleed button on the ANYVALVE pump head to release air if necessary.

NOTE: There are two common reasons for inflation and bead seal failure.

1. The tire was not properly installed. See figure 1A for a correct tire installation.
2. The valve stem was not tightened completely. See figure 2A for a correct valve stem installation.

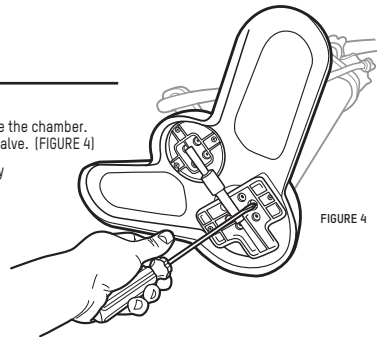
If inflation fails, deflate the tire and check for correct installation of the rim and valve. Once correct installation is confirmed, follow the inflation sequence again to correctly install and inflate the tire.



USING THE CONDENSATION DRAIN (FIGURE 4)

It is recommended that you drain the water periodically to prevent water from collecting inside the chamber. The drain valve is located on the base of the pump. Use a flathead screwdriver to loosen the valve. (FIGURE 4)

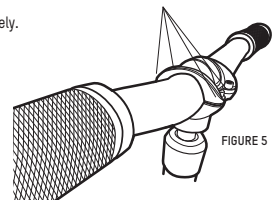
NOTE: The valve does not completely remove from the pump. Make sure the valve is completely locked tight after you drain the water. Air leak may happen if the valve is not locked tight.



USE YOUR OWN 31.8MM HANDLEBARS

This pump can be customized using any 31.8mm handlebar and the grips of your choice. To install, remove the four 3mm hex bolts from the stem clamp (FIGURE 5). Replace the bars. Reinstall the hex bolts and tighten securely.

FOUR (4) HEX BOLTS



Visit us at blackburndesign.com for product updates.

Blackburn 

Customer Service: 1-800-456-2355

Blackburndesign.com

Printed in Taiwan

**LIFETIME
WARRANTY**